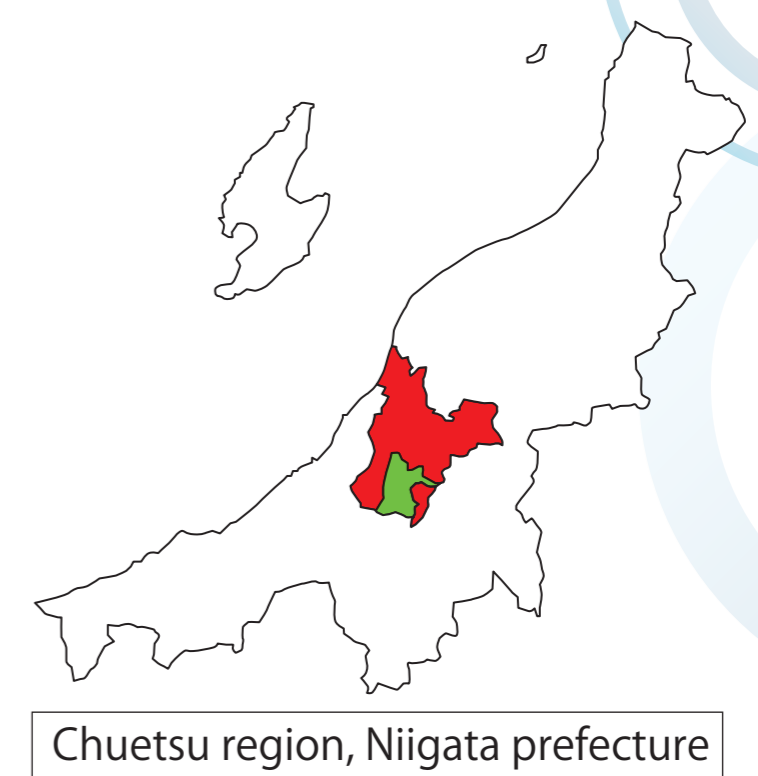


Japanese nationally important agricultural heritage systems

Rice farming and carp breeding make use of the blessing of the snow

Agriculture and fishery industry in Nagaoka & Ojiya

Born from the severe environment of a mountainous region



Today, the region once called Nijyumurago spreads over the Yamakoshi and Kawaguchi districts of Nagaoka city and the Higashiyama district of Ojiya city. This is an area with heavy snowfall of over four meters, and also known for frequent landslides. Residents of this region have transformed this unique natural environment into a benefit with wisdom and expert technologies.

Inclined land where frequent landslides took place slowly became gentle slopes, and residents developed a unique agricultural culture by creating rice terraces and shelf ponds for rice farming and for storing snowmelt water. Rice terraces and shelf ponds have been also used as breeding ground for carp, bred as a protein source during winter period.



Use of rice terraces and shelf ponds has developed the *nishikigoi* industry as well as unique irrigation technologies suitable for the natural environment, such as horizontal wells and systems to store snowmelt water and rainwater. Seasonal views featured with curved rice terraces and shelf ponds lying on top of one another offer visual enjoyment as some of original landscapes of Japan.

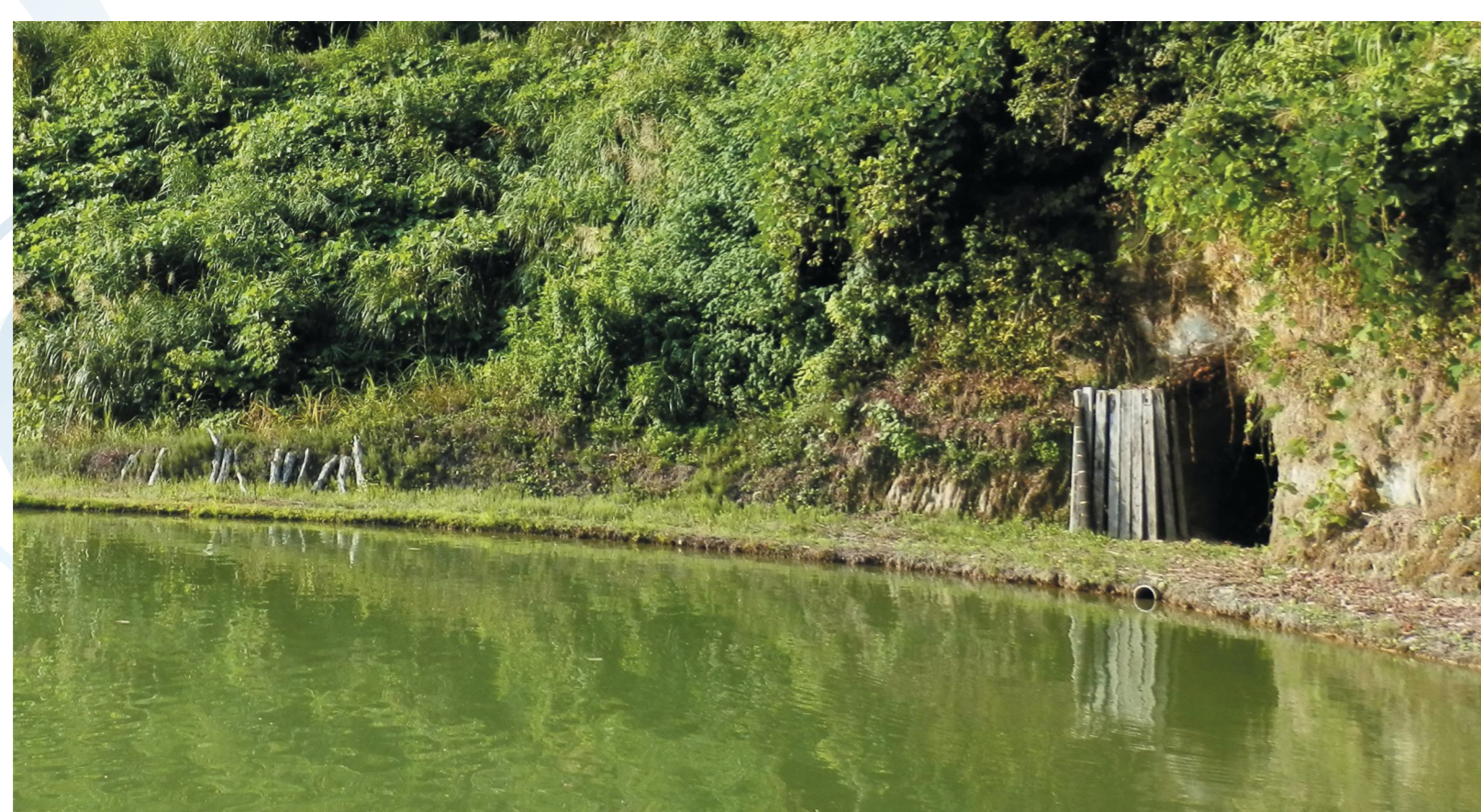
Impounded snowmelt water to ensure water in the mountainous area



Unique landscape of mixed rice terraces and shelf ponds



Ensuring stable water supply with horizontal wells



Transporting nishikigoi raised in a pond in the field to an ornamental pond

